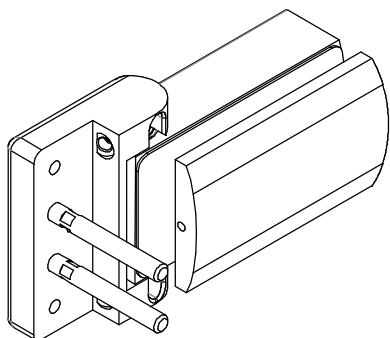
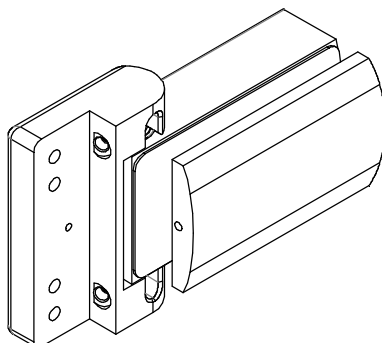




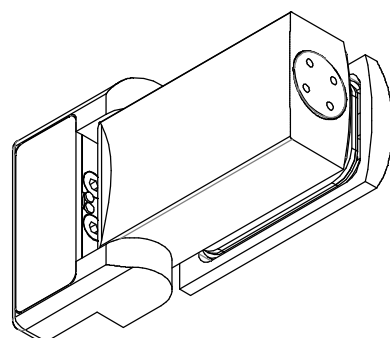
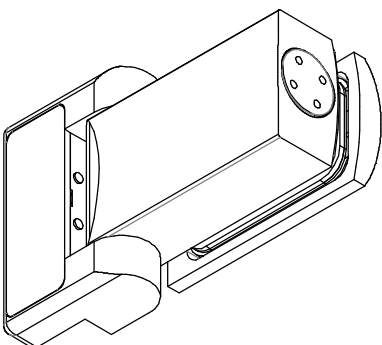
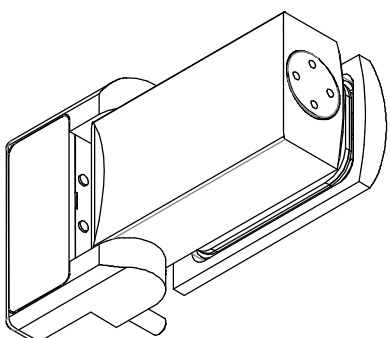
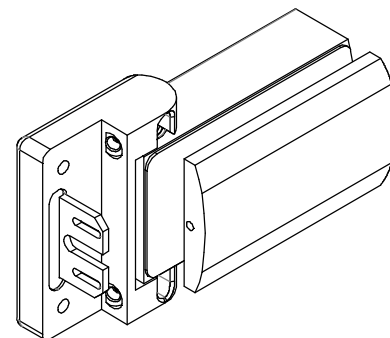
### 8060WD



### 8060GEA



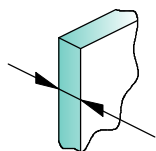
### 8060GES



GLASS - VETRO - GLAS

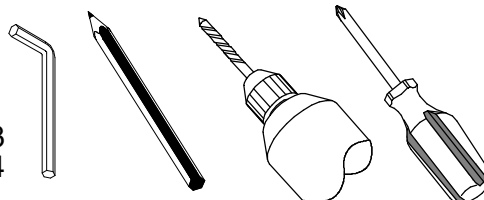
Tools Required  
Strumenti Richiesti  
Benötigtes Werkzeug

Aria del telaio  
Frame clearance  
Zargen Luft

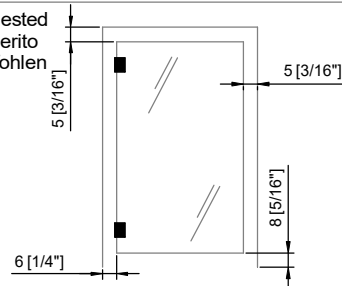


**8-10**  
[5/16"] - [3/8"]

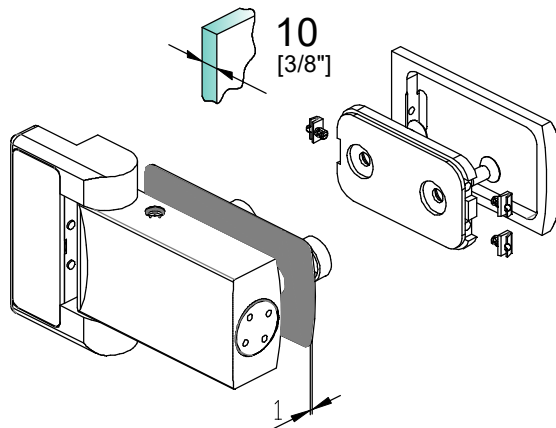
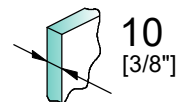
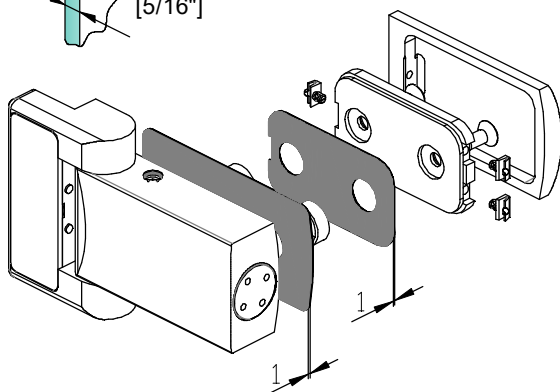
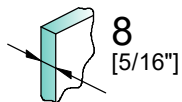
CH-3  
CH-4

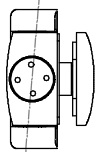
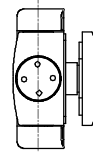
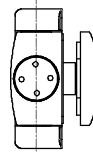
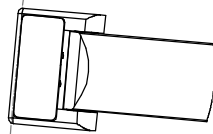
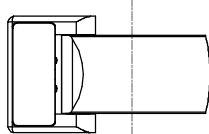
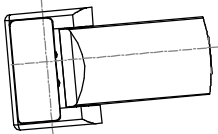
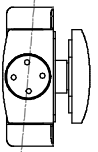
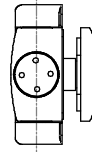
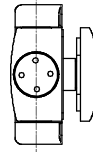
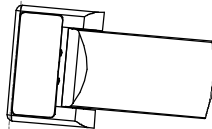
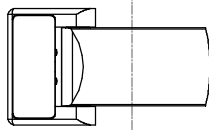
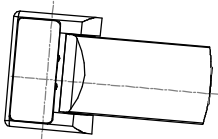
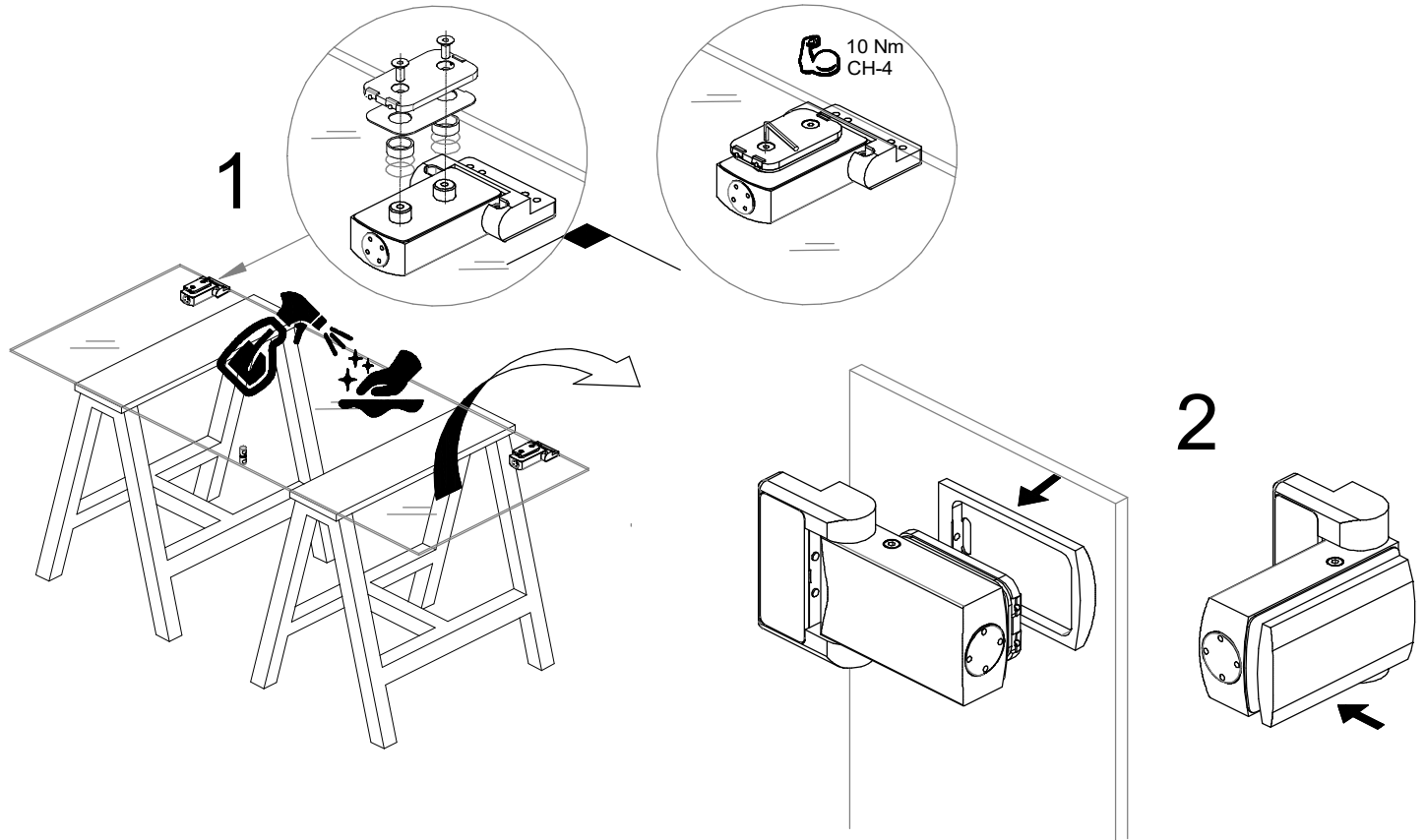


Suggested  
Suggerito  
Empfohlen



### Gasket - Guarnizioni - Zwischenlagen



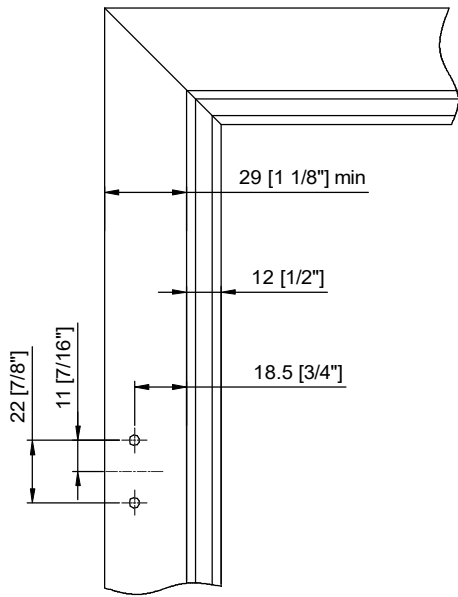




Note: The basic requirement for long-term, flawless function is the firm and stable connection of the door hinges to a load-bearing and torsion-resistant frame

Nota: Requisito fondamentale per un funzionamento ottimale e a lunga durata è il collegamento stabile delle cerniere della porta ad un telaio portante e resistente alla torsione

Hinweis: Grundvoraussetzung für eine dauerhafte einwandfreie Funktion ist die feste und stabile Verbindung der Türbänder an einem tragfähigen und torsionssteifen Rahmen

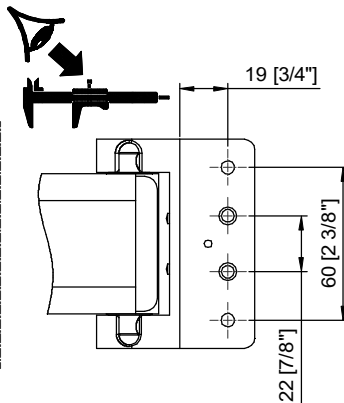
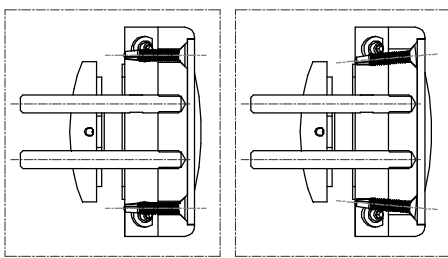
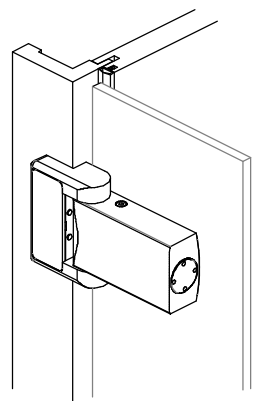
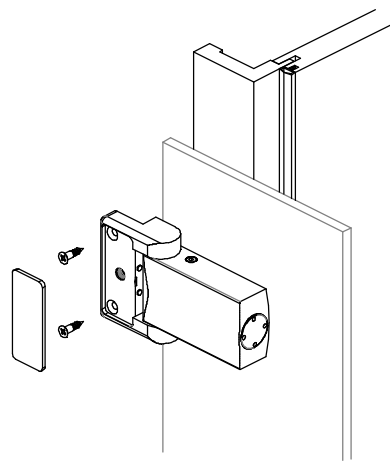
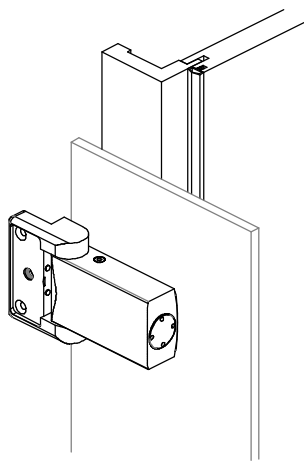
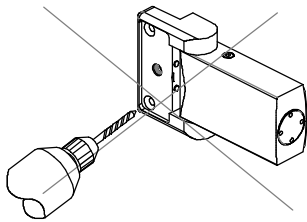


3

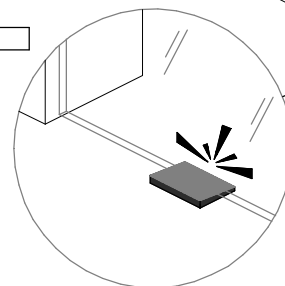
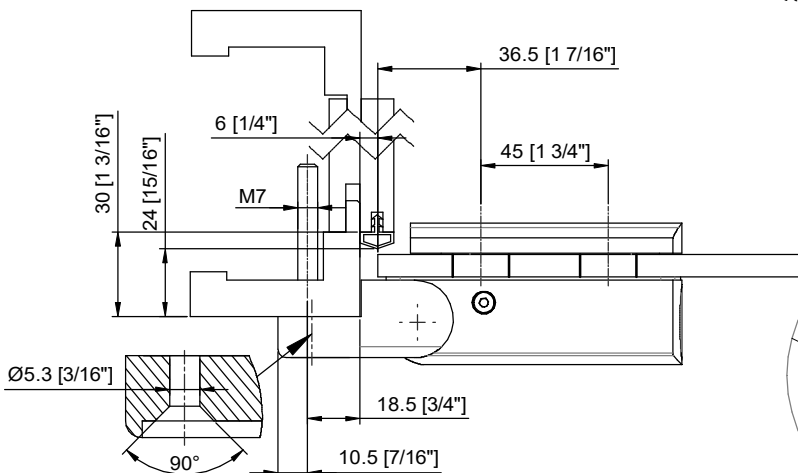
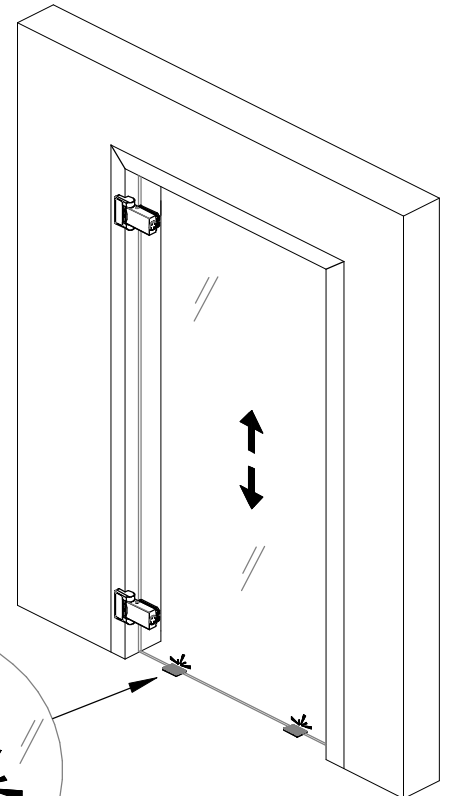
4

5

**NO !**



6

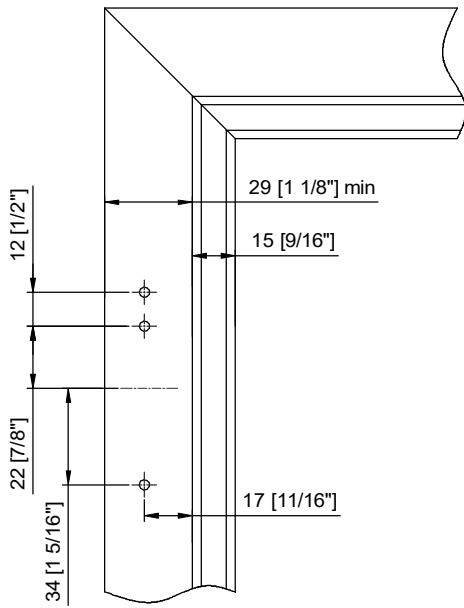




Note: The basic requirement for long-term, flawless function is the firm and stable connection of the door hinges to a load-bearing and torsion-resistant frame

Nota: Requisito fondamentale per un funzionamento ottimale e a lunga durata è il collegamento stabile delle cerniere della porta ad un telaio portante e resistente alla torsione

Hinweis: Grundvoraussetzung für eine dauerhafte einwandfreie Funktion ist die feste und stabile Verbindung der Türbänder an einem tragfähigen und torsionssteifen Rahmen

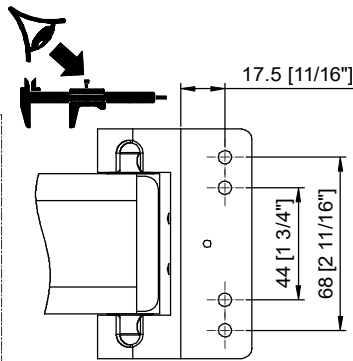
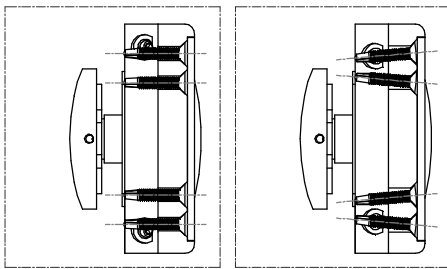
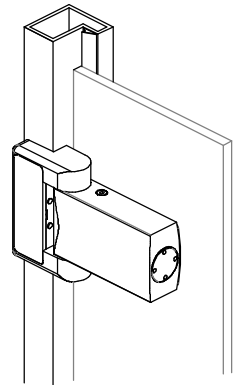
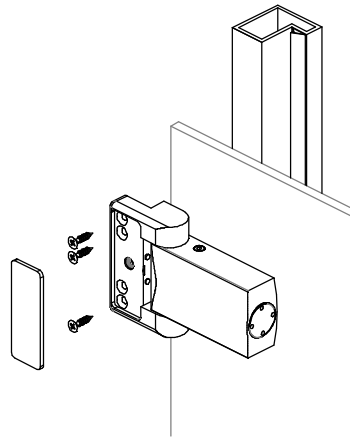
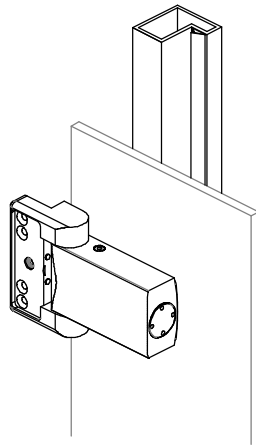
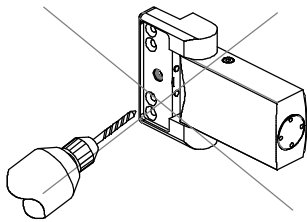


3

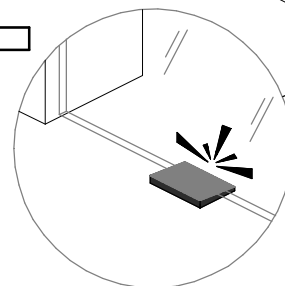
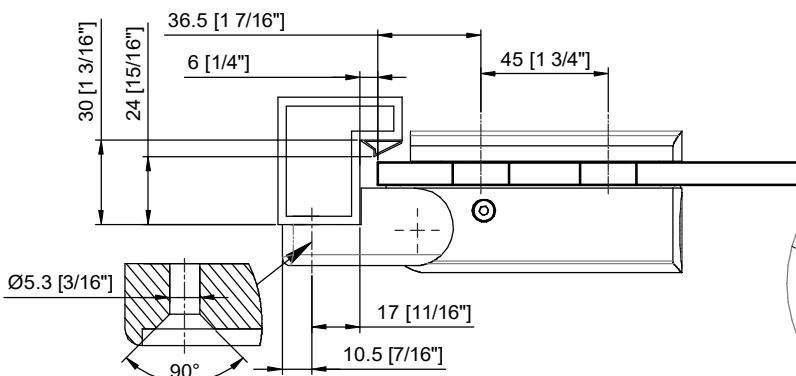
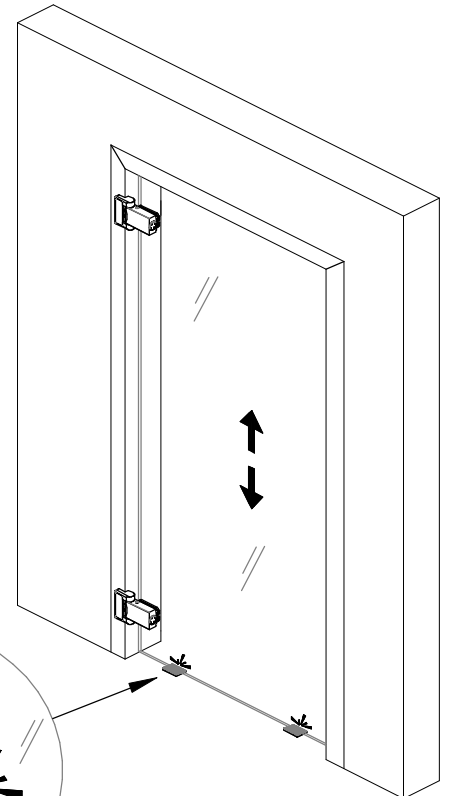
4

5

**NO!**



6

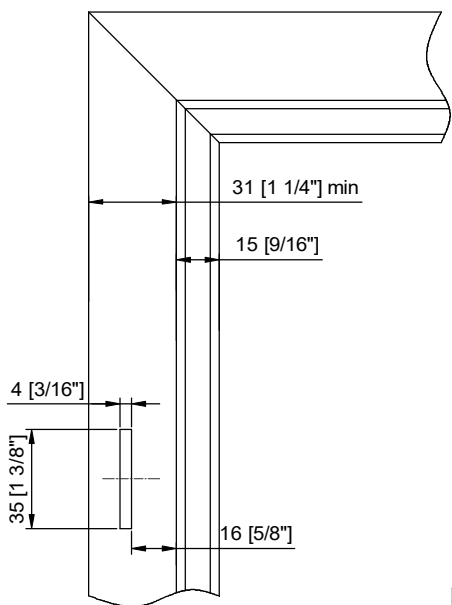




Note: The basic requirement for long-term, flawless function is the firm and stable connection of the door hinges to a load-bearing and torsion-resistant frame

Nota: Requisito fondamentale per un funzionamento ottimale e a lunga durata è il collegamento stabile delle cerniere della porta ad un telaio portante e resistente alla torsione

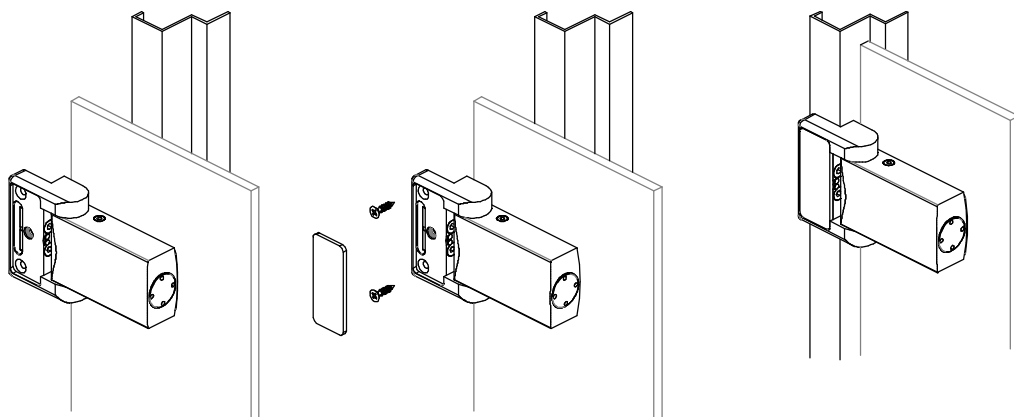
Hinweis: Grundvoraussetzung für eine dauerhafte einwandfreie Funktion ist die feste und stabile Verbindung der Türbänder an einem tragfähigen und torsionssteifen Rahmen



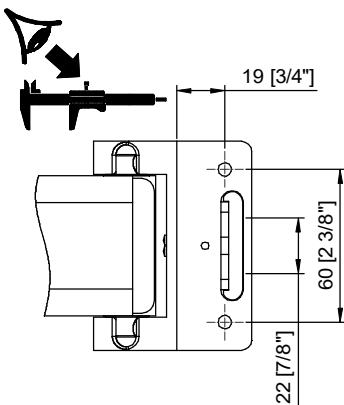
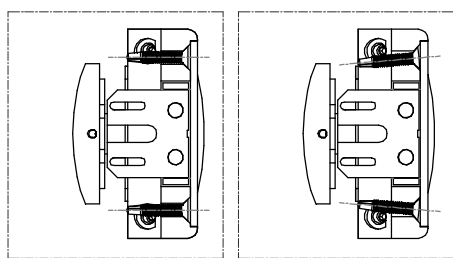
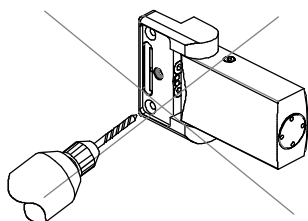
3

4

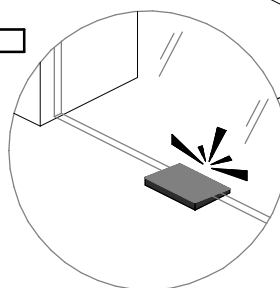
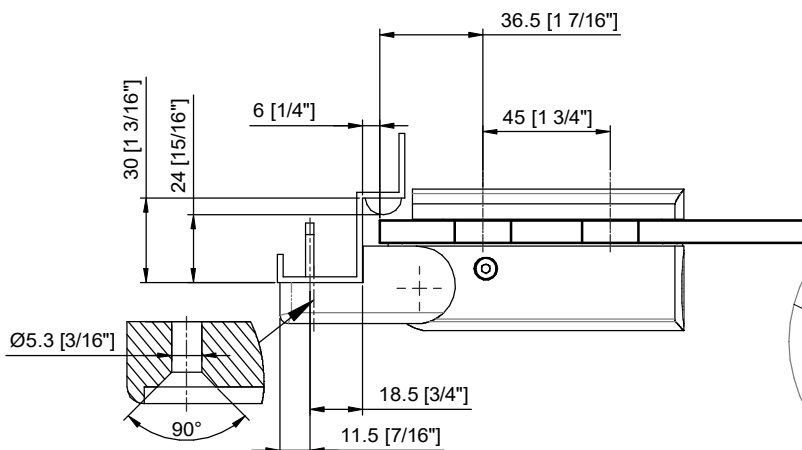
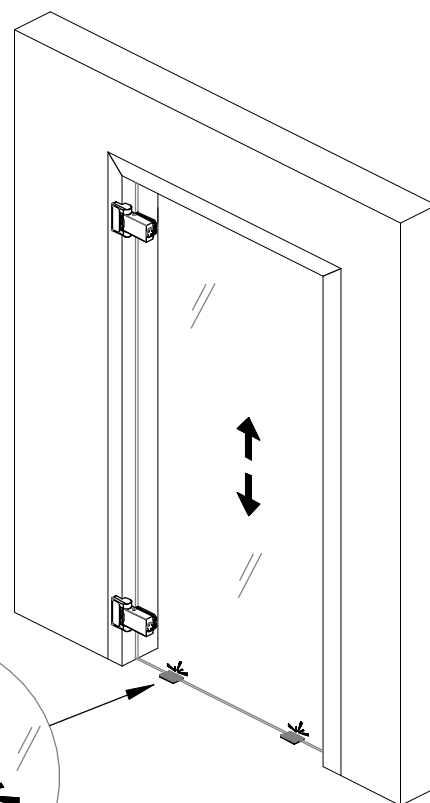
5



**NO!**



6





### 6

Closing speed adjustment

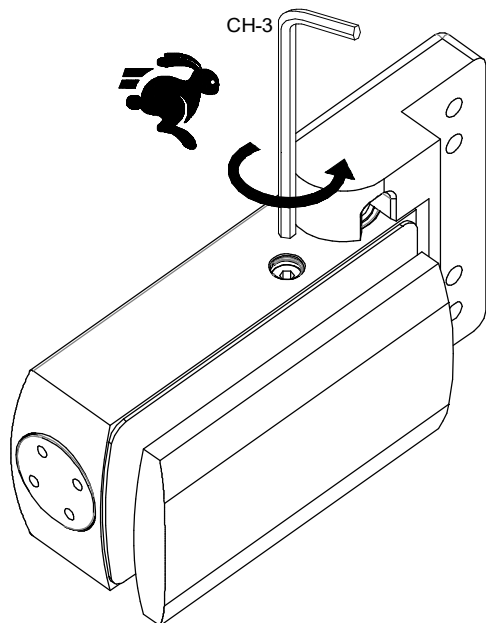
Regolazione della velocità di chiusura

Einstellung Schließgeschwindigkeit

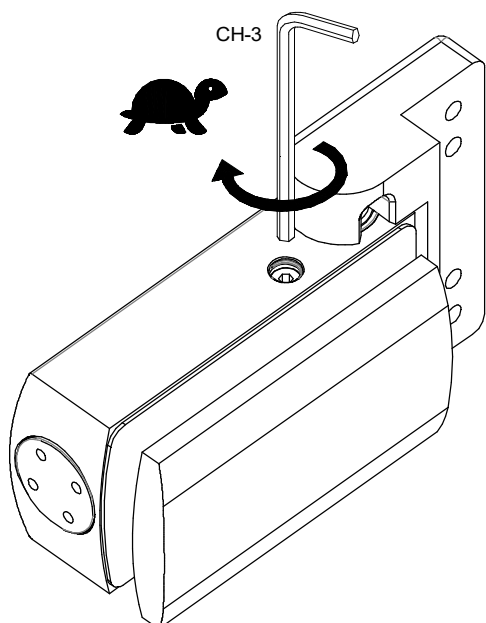
Factory settings: average pre-set

Impostazioni di fabbrica: media  
preimpostata

Werkseitige Konfiguration:  
mittlere Geschwindigkeit



#### FAST - VELOCE - SCHNELL



#### SLOW - LENTO - LANGSAM

